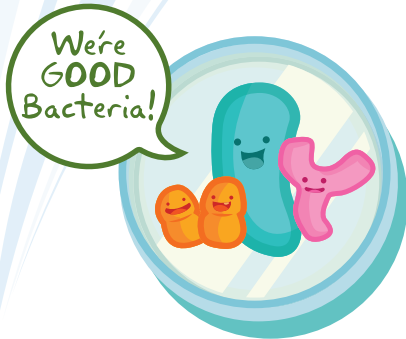


SIMPLE SEPTIC TIPS TO KEEP OUR LAKES CLEAN

FACT: Efficient Septic Systems Pollute Less → What Your Septic System Needs: **Time & Bacteria**

In order for GOOD Bacteria to work: Don't let 'bacteria killers' down the drain. They kill the good bacteria in your system.



- a. Chlorine Bleach & products containing chlorine
- b. Anti-Bacterial Soaps & Products
- c. Dishwasher Detergent containing chlorine (*most brands do!*)
- d. Dishwasher Rinse Aids (*Tip: use lemon juice instead*)
- e. Cream Cleansers – most have chlorine (*see a.*)
- f. Drain Cleaners
- g. Automatic Toilet Bowl Cleaners
- h. Liquid fabric softeners

DID YOU KNOW...



It only takes ONE load of dishes using a regular detergent to kill ALL the good bacteria in your system for up to 4 days!



EcoEthic SEPTIC TREATMENT IS AVAILABLE AT:

• **The Country Bakery**
Carnarvon, Just north of the intersection of Hwy. 35 & 118

• **Northern Expressions**
13588 Hwy #118, Haliburton

TIPS:

- Use Septic Friendly Products (*look for packages saying: no chlorine & no phosphates*)
- Never use a garburator
- If soap, toilet paper or cooking grease go down your drain or anyone in the house is on antibiotics – use EcoEthic Septic Treatment once a month to provide your system with the correct bacteria and enzymes to process these items



TIME TIPS

Your system needs as much time as you can give it to process the waste you put in before the next load of water arrives.

Remember: One Drop In = One Drop Out Of Your System

Give your system time by Minimizing Water Use and Spreading It Out Over Time

1. Your septic system is sized to handle 2 people for every bedroom – not more
2. Cut your household water use by 27% by installing an Ultra Low flow – 3 litres per flush
3. Try not to do more than ONE load of laundry per day
4. Keep showers short & use a low flow shower head
5. Use every opportunity to use less water when doing regular activities
6. Get a licensed septic pumper to pump out and inspect both sides of your tank every 3-5 years.



For great entertainment & more info watch the "Poop Talk" Lake Protectors Video at www.cohpoa.org



www.cohpoa.org

SEPTIC TIPS

Ways to Reduce Water Use – Over

REDUCE WATER USE = PROTECT YOUR LAKE



WHY – when a drop of water goes into your septic a drop of waste water leaves your system. Septic systems need time to process each load of water, so minimize and spread water usage out. Average indoor water use = 329 litres – per person/day. Your tank will be full within a few days of pumpout. Drop in = Drop out

BATHROOM

- Switch from a 13-litre flush toilet to a 3-litre flush toilet and save 50 litres a day per person (17,500 litres per year).
- Take Septic Showers = Lake Friendly Showers ... the average shower lasts 8 minutes. With a low flow shower head that equals 80 litres of water. Turn off the water while shampooing and soaping and save approximately 40 litres.
- Put a pail under the tap and collect the water while you are waiting for warm water – save another 8 litres. Use the water for gardens, toilet flushing etc.
- Turn off the water while brushing your teeth.

KITCHEN

- Use a dishwasher instead of hand washing ... It may feel good to wash by hand, but it's actually more wasteful: You use up to 108 litres of water per load by hand versus as little as 12 litres with an ENERGY STAR-rated dishwasher. If hand washing, capture the water and use for watering flowers etc.

LAUNDRY ROOM

- A standard clothes washer can use 80 litres of water per load whereas the newer energy star front loaders use 39 litres or less.

Remember – if you do more than 1 load of laundry in a day you risk an overload of your septic system which means that untreated waste (toilet etc.) will exit your septic system and be headed for your lake. Minimize water use and spread it over the week.

SOURCES

www.mcgill.ca/waterislife/waterathome/how-much-are-we-using

www.nrdc.org/stories/9-tricks-save-tons-water#:~:text=If%20you%20have%20a%20dishwasher,an%20ENERGY%20STAR%2Drated%20dishwasher.

For More Info: www.wastelessociety.ca



www.cohpoa.org

REDUCE WATER USE TIPS